

Board Base Furniture Design System V5.0 integrates all the outstanding functions of the existing board base furniture design software into one platform, which consists of the design, production and marketing modules so that it provides furniture entrepreneurs a perfect integrated solution in terms of furniture design, production, project tender, cost control and etc.

Design Module

- Board Based Structural Design
- Cabinet / Wardrobe Design
- Partition Design
- Solid Wood / Soft Furniture Design

Manufacturing Module

- Basic Manufacturing Drawings
- Raw Materials Management
- Board Cutting

Sale and Project Module

- Project Proposal
- Virtual Reality and Animation

Nine powerful modules combined together to fulfill all elements in the design, production and marketing requirements.

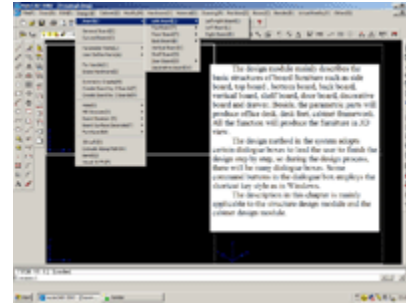
With the modularization of design functions that are made to various enterprises requirements, Yuan Fang Furniture Design software is a preferred choice to create competitive:

- Board Furniture Enterprise.
- Office Furniture Enterprise.
- Wooden / Soft Furniture Enterprise.
- Cabinet Enterprise
- Furniture Showroom
- Furniture Fittings Company

Board Based Design Module

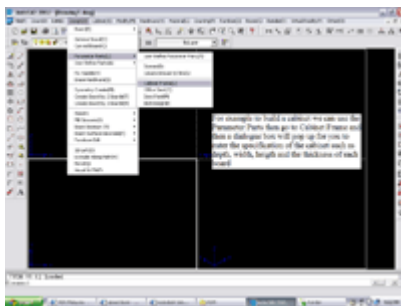
The design module mainly describes the basic structure of board based furniture such as side board, top board, bottom board, back board, vertical board, shelf board, door board, decorative board and drawer. Besides, the parametric parts will produce office desk, desk feet, cabinet framework. All the function will produce the furniture in 3D view.

The design method in the system adopts certain dialogue boxes to lead the user to finish the design step by step, so during the design process there will be many dialogue box. Some command buttons in the dialogue box employs the shortcut key style as in Windows.



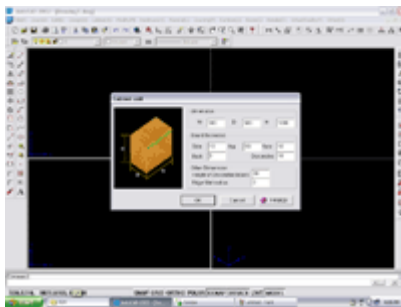
* Click on thumbnail to enlarge

The description in this chapter is mainly applicable to the structure design module and the cabinet design module.



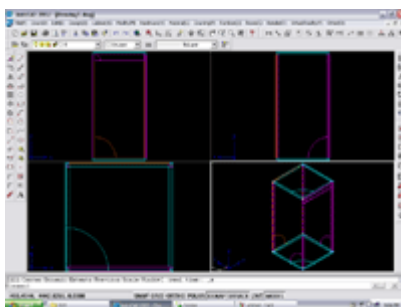
* Click on thumbnail to enlarge

For example to build a cabinet we can use the Parameter Parts then go to Cabinet Frame and then a dialogue box will pop up for you to enter the specification of the cabinet such as depth, width, height and the thickness of each board.



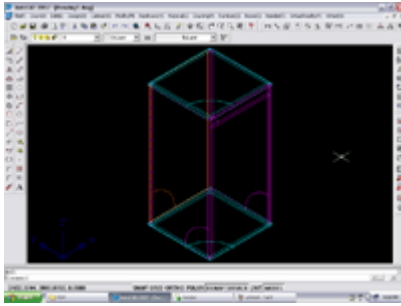
* Click on thumbnail to enlarge

From the pop up dialogue box you can input all the information such as width, depth and height. Beside that, you also can input the thickness for each of panel.



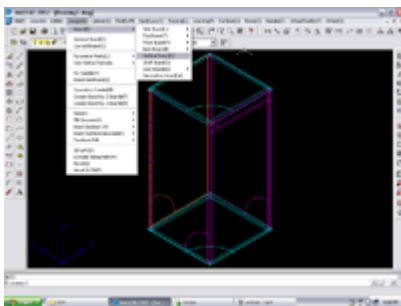
* Click on thumbnail to enlarge

After you have input the information in the dialogue box, click ok and pick a point in one of the view port. The build out of the cabinet is produce as shown.



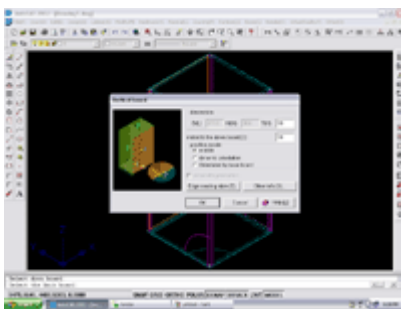
From the four view port you can enlarge one of the view to suite your working environment.

** Click on thumbnail to enlarge*



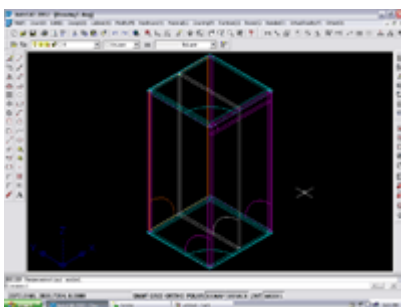
To build a center board / vertical board you just need to go to the function that shown in the picture above and it will pop up a dialogue box for you to input the information.

** Click on thumbnail to enlarge*



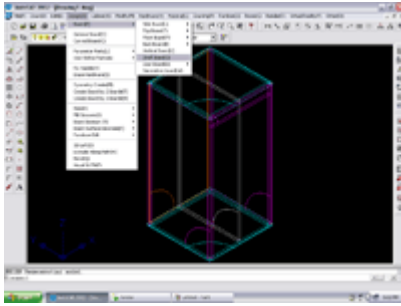
Therefore, you can input all the data and choose the position of the vertical board either in the center or you can randomly arrange or base by a board. Hence, these give you the freedom to create your own design.

** Click on thumbnail to enlarge*



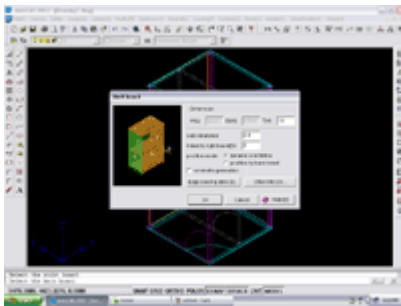
Therefore a center board / vertical board is created.

** Click on thumbnail to enlarge*



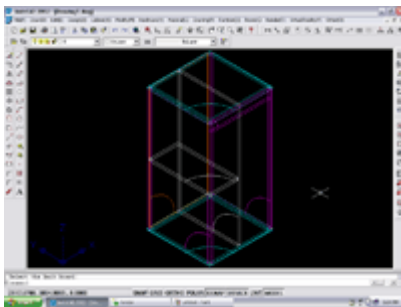
Furthermore, to create a shelf board you also can use the similar function as vertical board but different command shown in the picture.

** Click on thumbnail to enlarge*



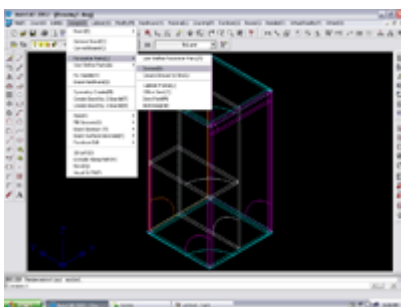
As define that the software is user friendly. All you need is just entered the information and the software will guide you to do all the steps. .

** Click on thumbnail to enlarge*



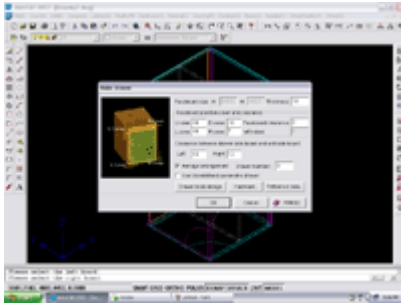
Therefore, a shelf is created.

** Click on thumbnail to enlarge*



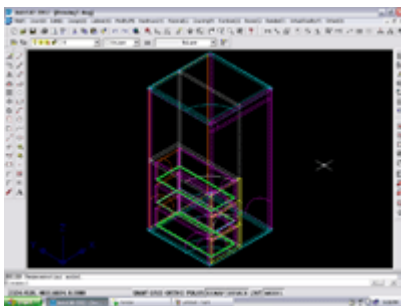
Now you can create the drawer by using the command as shown and a dialogue box will pop up for you to enter the data.

** Click on thumbnail to enlarge*



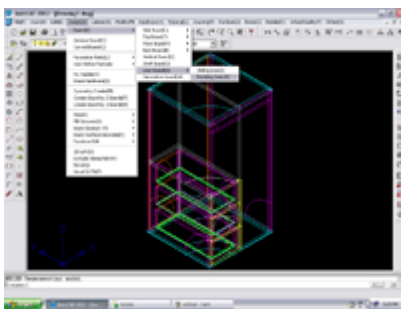
From the dialogue box you just enter the information and the specification of the drawer such as the allowance and clearance between drawers.

** Click on thumbnail to enlarge*



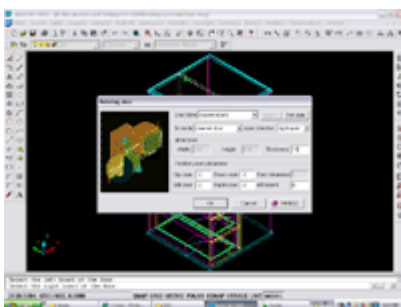
Now you have more complete cabinet with drawers. If you want to add another door at the right, the next step will guide you through the process.

** Click on thumbnail to enlarge*



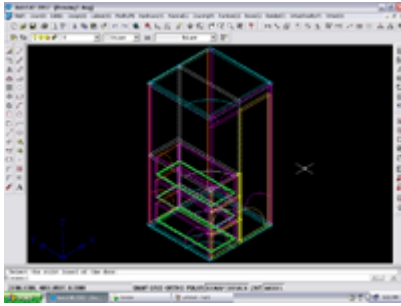
From the menu bar select the rotating door.

** Click on thumbnail to enlarge*



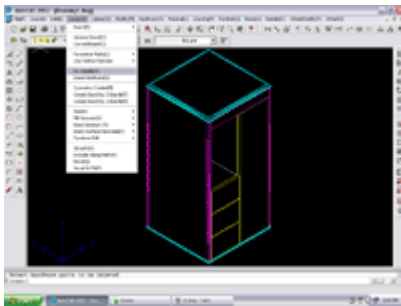
Therefore, from the dialogue box you just enter the information and specification of the door.

** Click on thumbnail to enlarge*



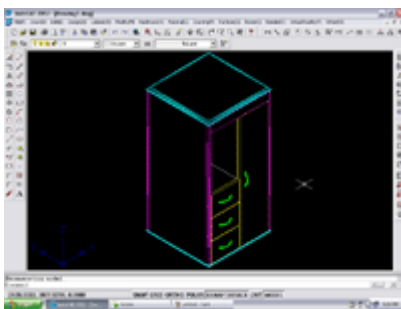
Hence, a door is created.

** Click on thumbnail to enlarge*



After you had finish create the drawer and door, you can fix handle to it. There are two way to fix the handle to the drawers and door. One of it is using the fix handle function in the design part.

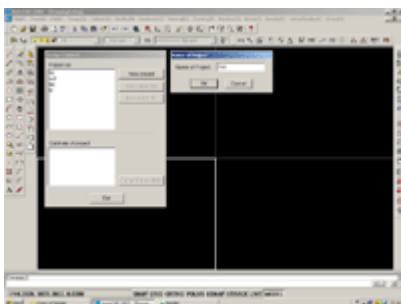
** Click on thumbnail to enlarge*



To fix the handle you just need to select the drawer and door and enter some information, and then the software will fix the handle for you. Now you have a complete cabinet with three drawers and a door.

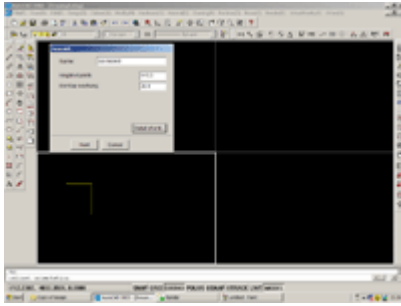
** Click on thumbnail to enlarge*

Cabinet Design Module



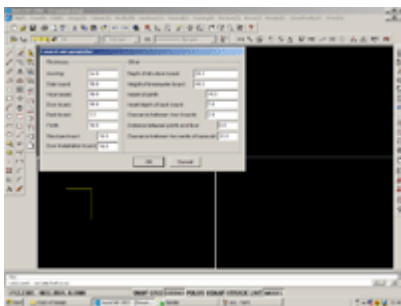
This module enable you to list down or category you kitchen cabinet or wardrobe in a proper way.

** Click on thumbnail to enlarge*



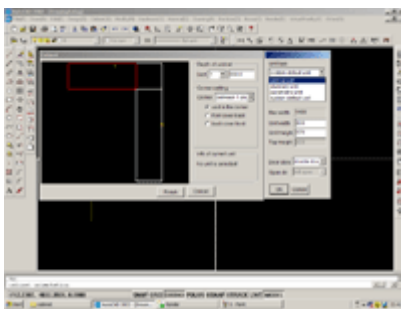
After you have classified the project you want, you can start your cabinet arrangement by putting in the project name.

** Click on thumbnail to enlarge*



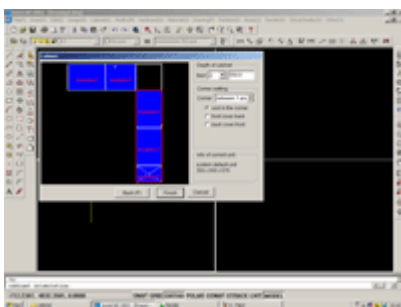
After you have entered the project name you can now specified the detail of the cabinet such as board thickness.

** Click on thumbnail to enlarge*



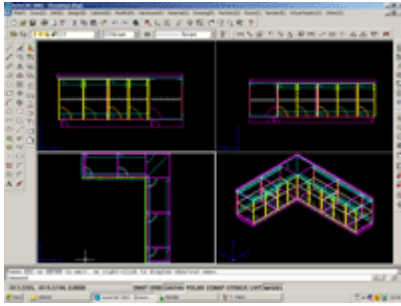
Once you have setup the perimeter for the build up area, you are now ready to input the model of cabinet and size just by using the model from library or default model..

** Click on thumbnail to enlarge*

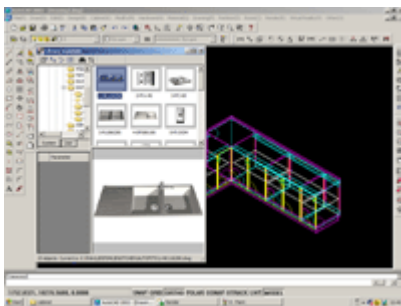


Once you have select or input all the data to the build up area, you just need to click next to produce the cabinet.

** Click on thumbnail to enlarge*

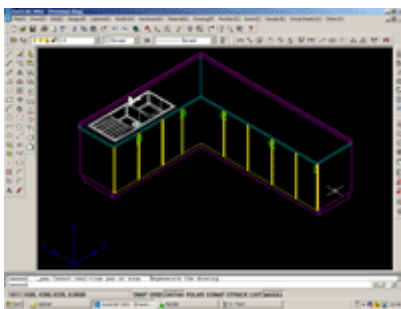


** Click on thumbnail to enlarge*



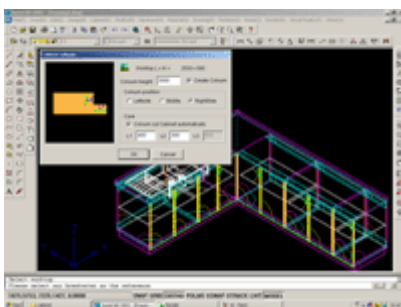
** Click on thumbnail to enlarge*

The software also provides you with lot of kitchen accessory and utility to match your design.



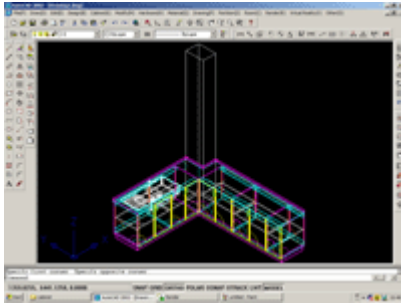
** Click on thumbnail to enlarge*

Now, you have more complete kitchen cabinet.



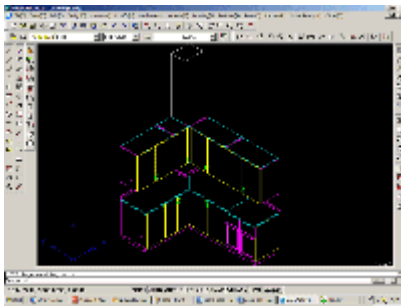
** Click on thumbnail to enlarge*

Furthermore, you also can build a column and the software will automatically cut the hole for you.



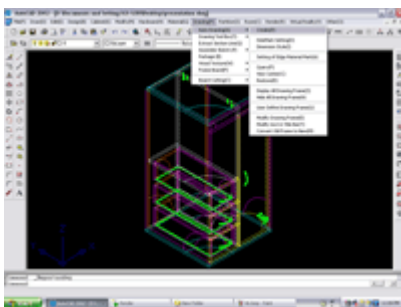
Now you have a kitchen cabinet with a column build at the corner.

** Click on thumbnail to enlarge*



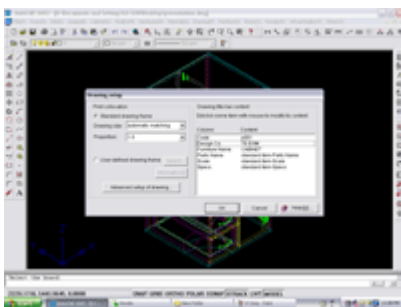
** Click on thumbnail to enlarge*

Manufacturing Module



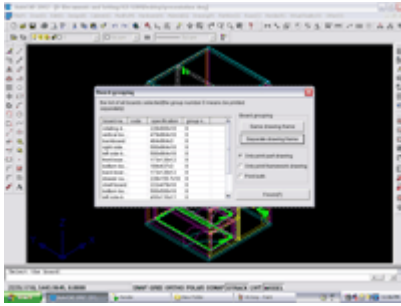
This module will help you to produce technical / part drawing automatically.

** Click on thumbnail to enlarge*



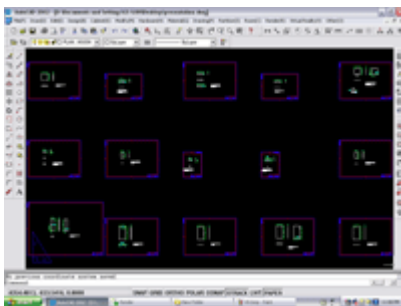
All you need to do is to select the product that you want to produce the technical drawing, and then it will pop up the dialogue box for you to fill in the information such as product code, company name and furniture name.

** Click on thumbnail to enlarge*



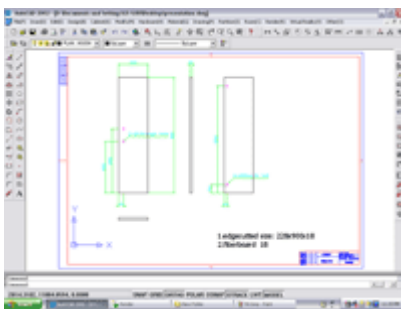
Once you had entered all the information and click ok, it will pop up the dialogue box and you just need to select the drawing frame to produce the drawing.

** Click on thumbnail to enlarge*



Here you are, all the parts drawing has been automatically generated.

** Click on thumbnail to enlarge*



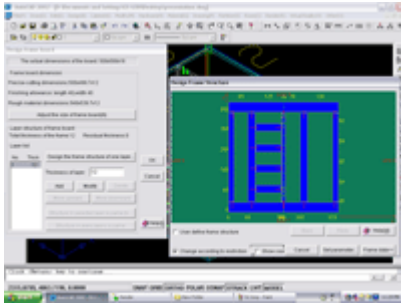
Here are some of the example parts drawing of the cabinet. The drawing include all the distant and boring hole dimension.

** Click on thumbnail to enlarge*



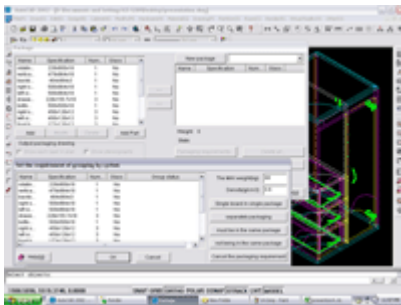
Example of the part drawing

** Click on thumbnail to enlarge*



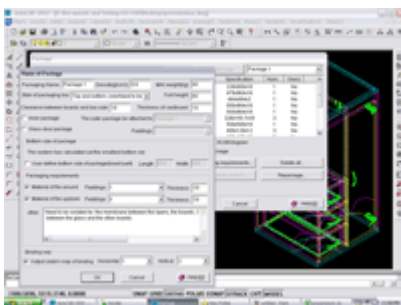
Under the same module also provide you the capability of designing the frame board or hollow section furniture.

** Click on thumbnail to enlarge*



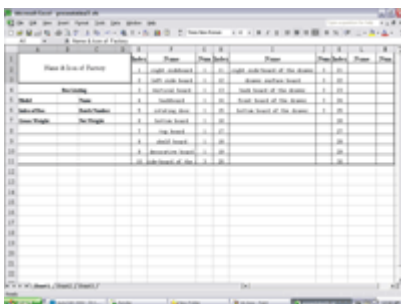
After you have finished the designing, produce the part drawing and BOM, it is time for you to do packaging. Therefore, the software provides you a very useful packaging system for your reference.

** Click on thumbnail to enlarge*



From the packaging system you can input the requirement for your packaging style.

** Click on thumbnail to enlarge*



Once you finish setting the packaging, it will export the list of the cabinet part to excel for you to do checking. This is to ensure that none of the part is left out.

** Click on thumbnail to enlarge*



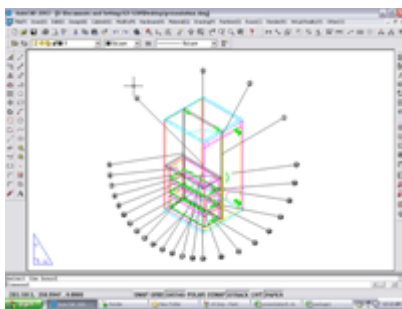
This diagram will show you how the arrangement of the packaging will look like and the position of each board in the package.

** Click on thumbnail to enlarge*



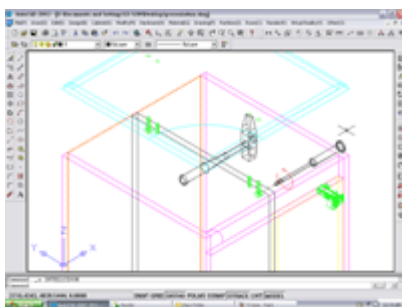
The information of the packaging is produce for your reference.

** Click on thumbnail to enlarge*



From this module you also can have a labeling system for your product just by few simple steps.

** Click on thumbnail to enlarge*



This module also will help you to produce assembly instructions which are very useful in knock down furniture industries.

** Click on thumbnail to enlarge*

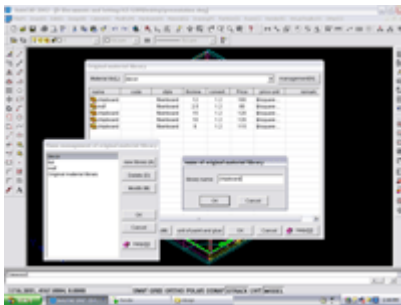
Board Cutting Module



This is the cutting patent or arrangement by the software

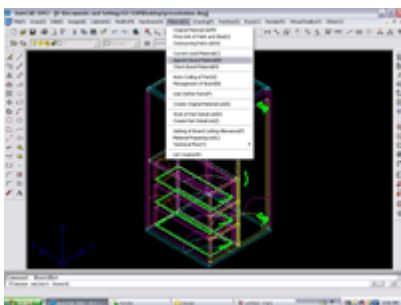
* Click on thumbnail to enlarge

Material Management Module



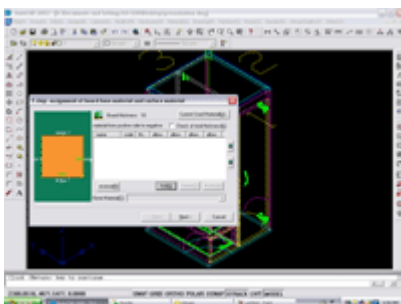
Before you can produce bill of material (BOM), you need to build your own material library. To build the library you just need to input the information by using the provided data base.

* Click on thumbnail to enlarge



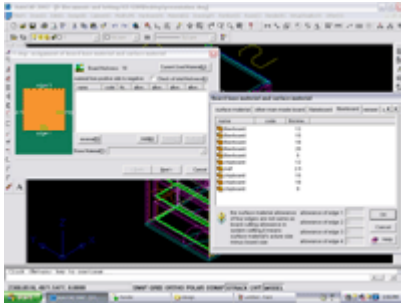
Once you had created your own material library, you can start appoint material to each part of the cabinet with the command provided.

* Click on thumbnail to enlarge



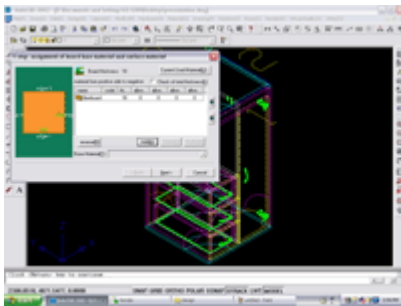
First of all, the pop up dialogue box will ask you to add the material of the panel you want. Then, you click the add button and you will be pop up with a dialogue box.

* Click on thumbnail to enlarge



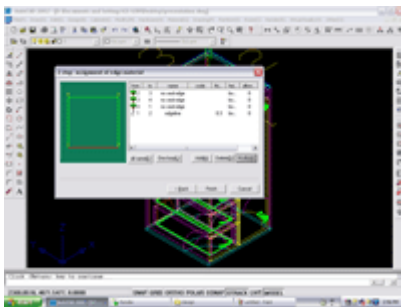
Therefore, you need to choose the material from the list that you have create in your material library.

** Click on thumbnail to enlarge*



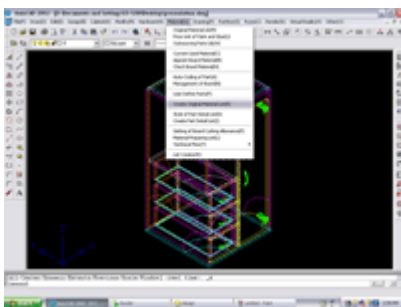
Hence, the material had been applied to the panel. You click next to go to the next step of the process.

** Click on thumbnail to enlarge*



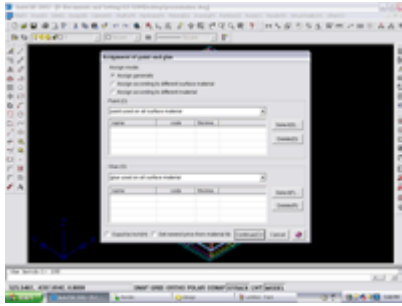
This process is to define the edging or attachment of the panel you had chosen. The process enable you change or customize your own edging or attachment.

** Click on thumbnail to enlarge*



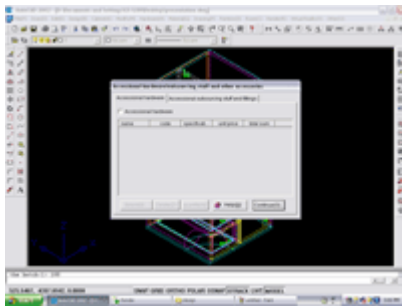
After you have appointed the material and edging to the entire panels, all you need to do is to go to function above and all the step will be guide by the program.

** Click on thumbnail to enlarge*



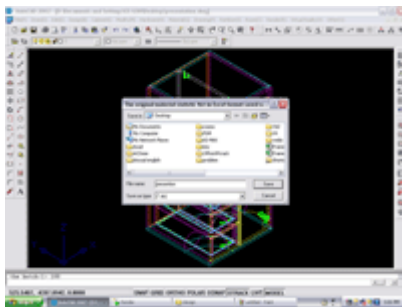
Here the program will ask you whether to assign glue or paint that will be used in the cabinet. Then, click continues.

** Click on thumbnail to enlarge*



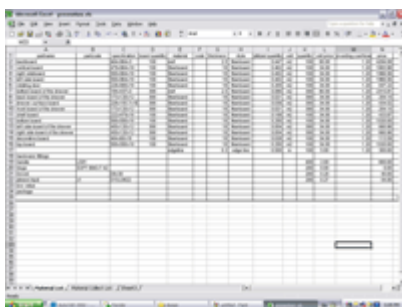
Besides calculating the cost for paint and glue, it also can help you to calculate the cost for extra accessory such as sticker.

** Click on thumbnail to enlarge*



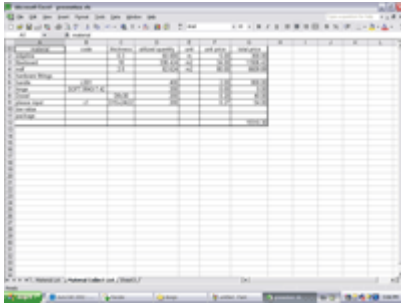
Then, the file will be export to excel for your information and modification.

** Click on thumbnail to enlarge*



From here you can see the Bill Of Material (BOM) been produce just simply a click from your fingertip.

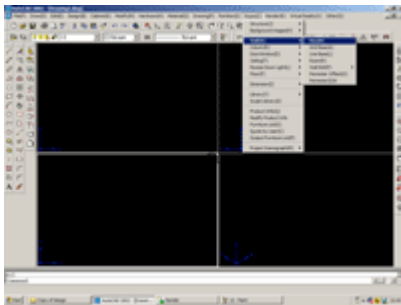
** Click on thumbnail to enlarge*



The summary of BOM also automatic generated. Beside it can automatic generated BOM, it also can produce material preparation list and the process flow chart.

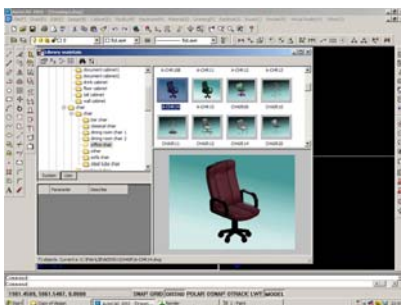
** Click on thumbnail to enlarge*

Project Proposal Module



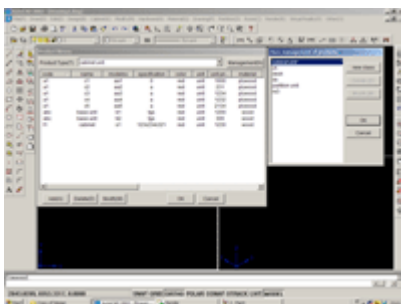
This module is more concern for interior design work such as build up a room and fix the door, window and arrange the furniture.

** Click on thumbnail to enlarge*



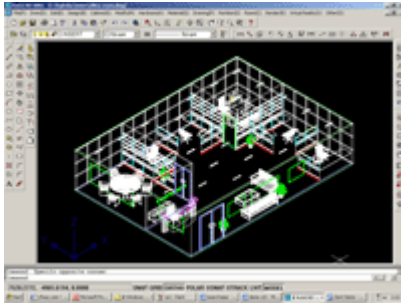
Since it is more toward ID work, it comes with a huge library for you to choose to match the environment for displaying your furniture. You also can build your own library by using the model you have design.

** Click on thumbnail to enlarge*



All the model or furniture can be adding data and information for you to produce bill of quantity or quotation.

** Click on thumbnail to enlarge*



Here are an office with all the furniture, door, window and accessory that build by using the module.

** Click on thumbnail to enlarge*



Here is the quotation for the office and are automatically produce and export to excel.

** Click on thumbnail to enlarge*

Virtual Reality Module



This module is to help you to do the furnishing or presentation for your furniture model.

** Click on thumbnail to enlarge*



Therefore, you can visualize your product before produce it.

** Click on thumbnail to enlarge*